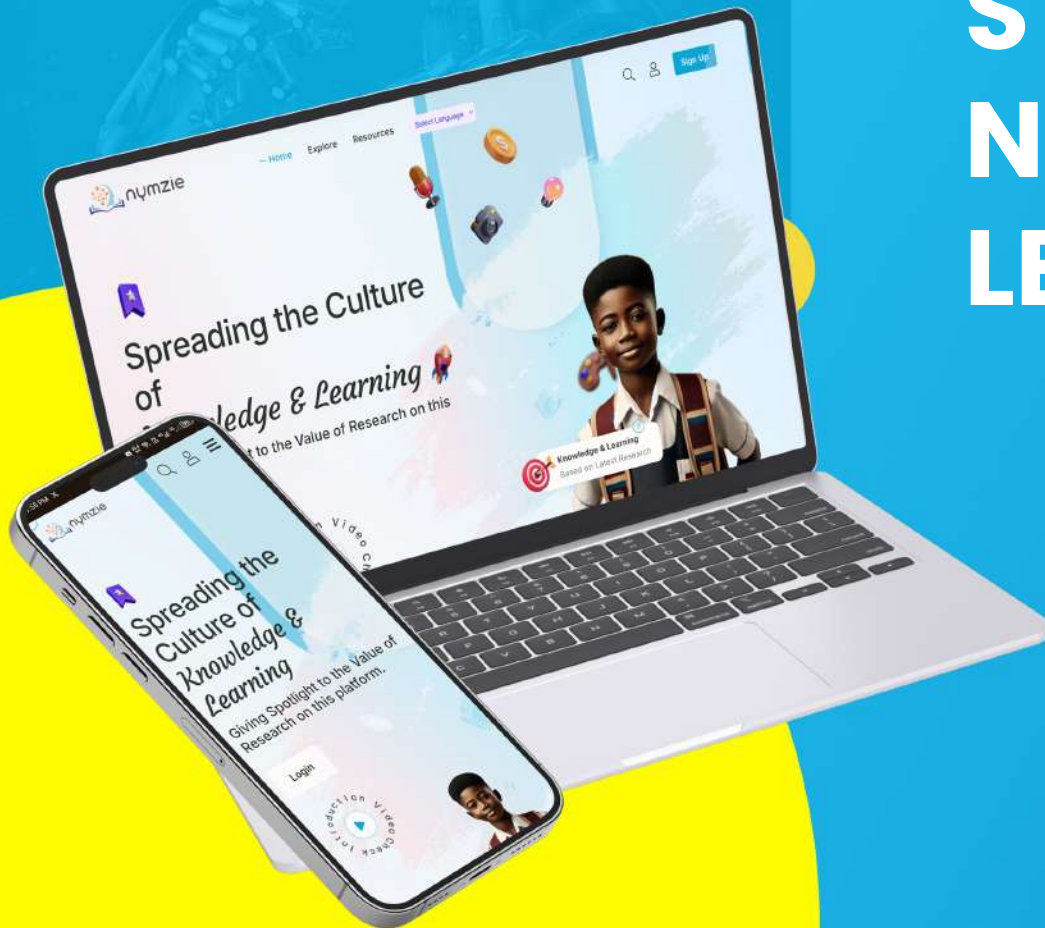


UNLOCK PERSONALISED LEARNING FOR EVERY STUDENT WITH THE NYMZIE AI ASSISTED LEARNING PLATFORM

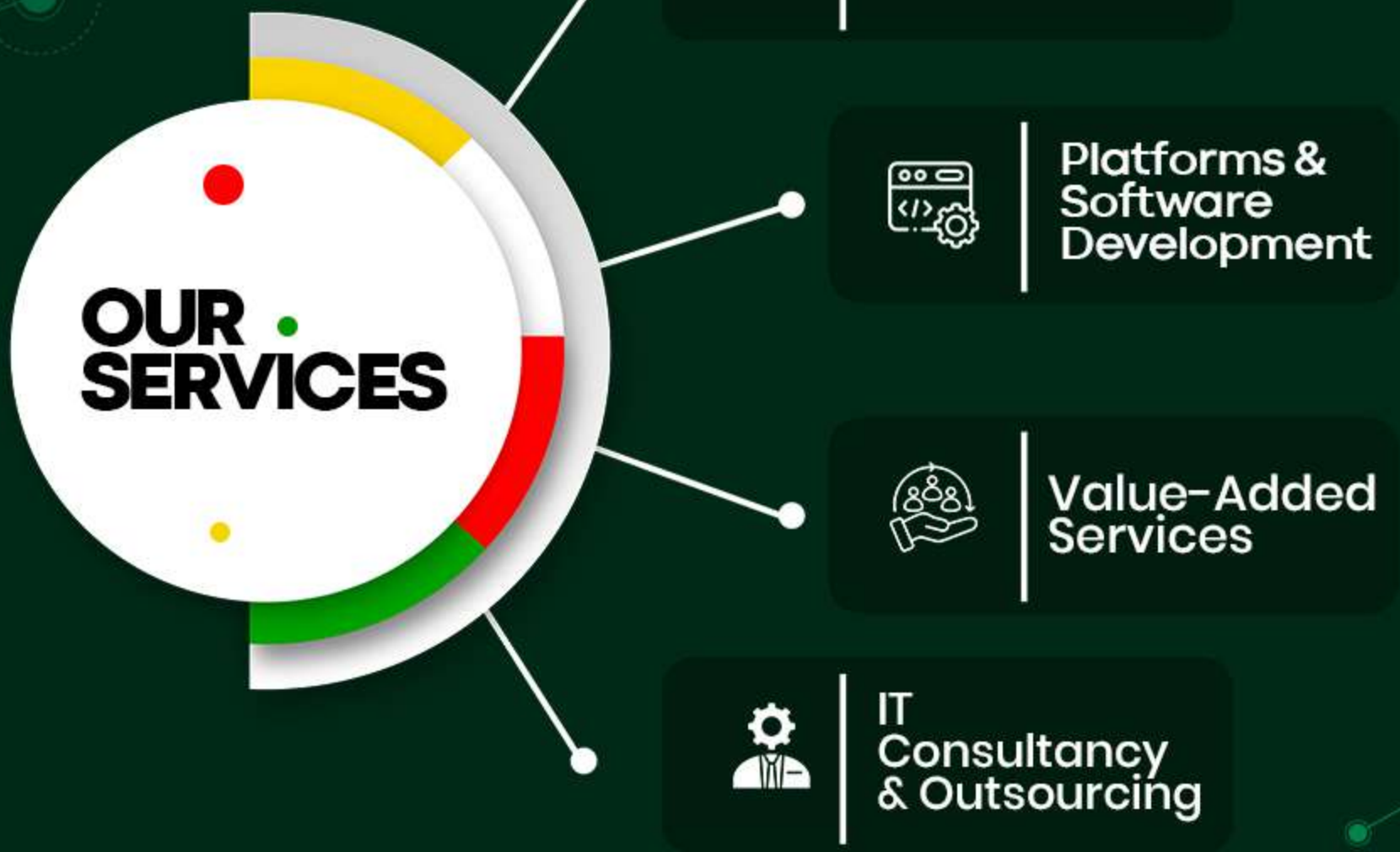




WHO WE ARE

We are a technology company focused on enhancing business efficiency through innovative solutions. Our expertise includes AI, big data, software development, mobile apps, and communication systems. By leveraging advanced algorithms and data analysis, we enable businesses to gain a competitive edge.





OUR MISSION, VISION & VALUES



VISION

Making our customers
free to achieve



MISSION

To drive growth using
relevant technology and
inspire change in people
and business.



VALUES

Service | Innovation |
Team Spirit

INTRODUCTION

Nymzie is transforming the educational landscape by offering a comprehensive digital learning platform tailored to support Ghanaian and International curriculums. This platform delivers:

- **Comprehensive Learning Management Dashboard**, a unified interface for parents, teachers, students and administrators to track performance.
- **AI Tutor Me**, an intelligent virtual tutor that adapts to each student's pace and learning style to teach them on any topic or subject area peculiar to them.
- An extensive collection of past **local and International exam questions** and interactive quizzes, ensuring robust exam readiness.
- **Data-driven analytics** for real-time insights into individual and group performance, enabling targeted interventions by teachers, school administrators and parents.



FEATURES ON THE PLATFORM



Accessible Features on Nymzie:

AI Tutor Me

Curriculum-Aligned Study Materials

Past Examination Questions

Discussion Forums

Parent Portal

Interactive Quizzes & Practice Questions

AI Assisted Student Growth Monitoring & Evaluation

School and Teaching Staff Portal

Online Bookstore

Predict Exam Questions

Performance Analytics & Tracking

OUR AIM

1 Enhance Student Performance

Creating custom learning platforms where education is not seen as a one-size-fit-all but uniquely tailored to each student's learning pattern, thus making assessment more specific and measurable.

2 Empower Teachers

Elevate the teaching standards by providing multiple engagement options for teachers to interact with students using relevant digital tools.

3 Improve Stakeholder Engagement

Provide engagement platforms for the school administrators, student and parents/guardians to be involved and appreciate learning milestones.



VALUE PROPOSITION

01.

Tailored Education for Unique Needs

The platform is an advanced AI learning platform designed to profile each student's learning level and tailor educational content to their specific needs.

02.

Adaptive Learning

Our platform adapts in real-time, adjusting the difficulty and type of content based on the student's performance.

03.

Support for Teachers

The platform provides teachers with tools and resources to assist lesson planning, student assessment, and professional development opportunities to enhance teaching skills.

04.

Comprehensive Subject Coverage

The platform covers a wide range of subjects for both local and international curriculum, from core academic disciplines and extracurricular topics.

05.

Data-Driven Insights

Parents, Teachers and school administrators gain valuable insights through detailed analytics and reports to identify areas where students may need additional support.

06.

Institutional Content Upload

The platform enables school administrators to upload curriculum related contents (curriculum, quizzes, assignments, etc.) for easy access to students.

07.

Blended Learning Approach

The platform bridges AI capabilities with human teaching excellence.

08.

Collaborative AI-Enhanced Instruction

Our platform amplifies teacher expertise by providing intelligent insights, allowing educators to:

- ❖ Identify learning gaps quickly
- ❖ Design targeted intervention strategies

09.

Commitment to Privacy and Security

The platform prioritizes the privacy and security of student data, complying with all relevant data protection regulations as well as ensuring all security measures are in place.

IMPLEMENTATION PLAN

1

Week 1 (Onboarding and Teacher/Key Stakeholder Training)

- Npontu experts will train teachers, ICT coordinators, and administrators on platform usage, data interpretation, and best practices.

3

Week 3 (Student Training & Support)

- Npontu experts will train students to be able to use the key features like the AI Tutor Me, Past Questions, Predict Exam Question, etc.

2

Week 1 - 2 (Student Enrolment)

- Bulk registration for students, and assigning access credentials that can be used both in school and at home.

Go-Live

PRICING AND SUBSCRIPTION



Cost Details	Amount (GHS)
Subscription per Student	50.00 per Student per Term
Bulk Student Enrolment	Free
Trainings & Support	Free
TOTAL	50.00 per Student per Term

CONTACT US

marketing@npontu.com |
business@npontu.com

055 654 1525 | 059 391 9912 |
030 801 2328



[npontutechnologies](https://www.npontutechnologies.com)

 www.npontu.com

